

CERTIFICATE OF LOCATION OF GOVERNMENT CORNER

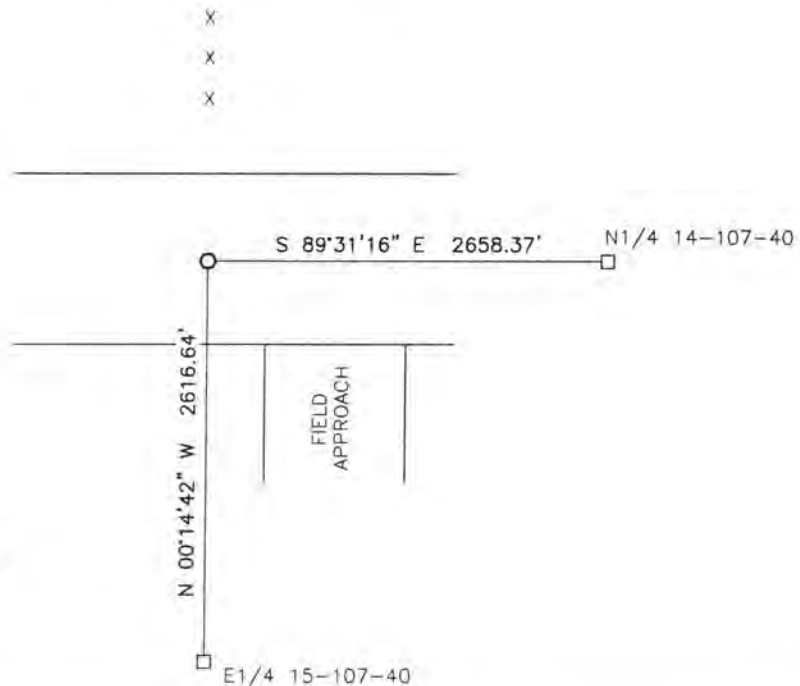
NORTHEAST Corner of Section 15, Township 107, Range 40, 5TH P.M.

STATE OF MINNESOTA, County of MURRAY

At the corner location shown on the sketch:

- On _____ found a _____
DATE
- left monument as found, lowered monument, removed monument (explain)
- On 7/24/17 placed a 5/8" iron with seal #43844
DATE

SKETCH OF REFERENCE TIES



Minnesota State Plane Coordinate
System Murray County Datum
NAD83 (1996)
N: 184648.980
E: 537755.960

Statement of evidence relative to this corner location is on back of page.

I hereby certify that this document and the data contained herein was prepared by me or under my direct supervision.

Lawrence B. ... 9/18/17
SIGNATURE DATE

Registration No. 43844

- Land Surveyor, Professional Engineer
- County Surveyor, County Engineer

STATE OF MINNESOTA, }
COUNTY OF MURRAY, } ss.

I hereby certify that the within Instrument was filed in this office for record on the 12TH day of OCTOBER A.D. 20 17 at 11:00 o'clock A. M, and was duly recorded as Document No. _____

Lucy C. Larson
County Recorder

Statement of Evidence

In 1861, L. Brockmann did the original subdivision of the township.

On July 24, 2017, Bueltel-Moseng Land Surveying dug with a backhoe in the center line of the road and in line with a fence to the north and found nothing. We set 5/8" iron with seal #43844 in the center of the road and in line with the fence line to the north.